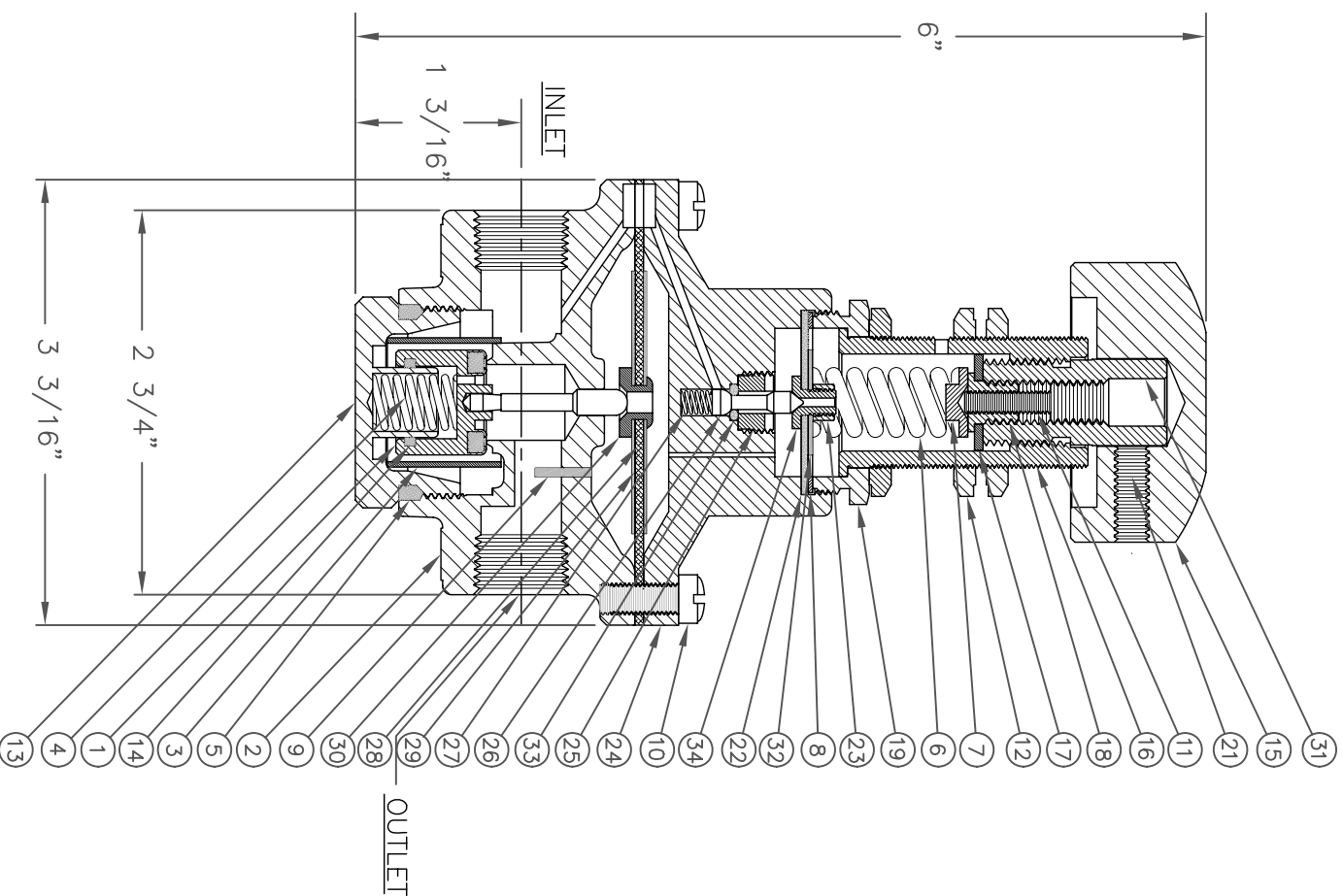


PARTS LIST

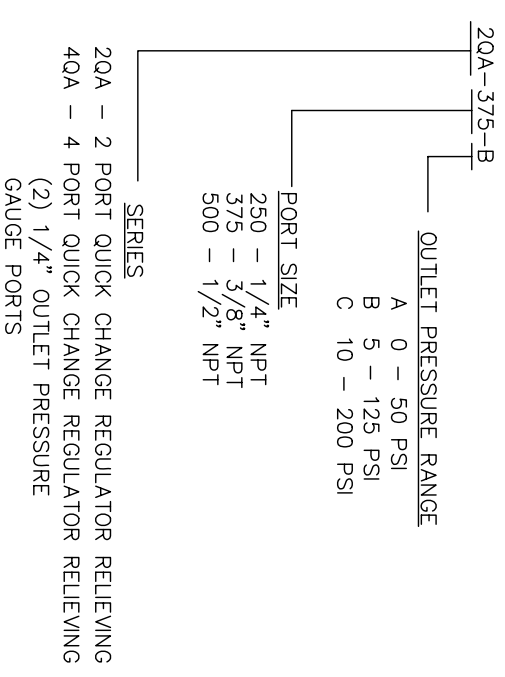
ITEM #	DESCRIPTION	PART NUMBER	MATERIAL
1	VALVE STEM ASSY, REL VITON	G-206-R-V	BRASS AND VITON
2	BODY, 3/8" 2 PORT SER. QA REGULATOR	QA-20-2P-375	BRASS
3	SEIVE, SERIES 200 REGULATOR	G-209	304 SST.
4	VALVE, SPRING, 200 SERIES REGULATOR	G-216	17-7 SST.
5	O'RING, SERIES 916 VITON 75 DURO	916-V75	VITON
6	"A" RANGE SPRING, 0-50 PSI	G-112-A	MUSIC WIRE
	"B" RANGE SPRING, 5-125 PSI	G-112-B	MUSIC WIRE
	"C" RANGE SPRING, 10-200 PSI	G-112-C	MUSIC WIRE
7	SPRING BUTTON, 100 SERIES REGULATOR	G-114	BRASS
8	WASHER-DIAPHRAM (TEFLON) SERIES J	J-12-T	TEFLON
9	1/16" DIA X 3/8" LONG SS ROLL	GDR-8-500	18-8 SST.
10	SCREW, 12-24 X 1/2" ZINC & CAD PLATE	G-213 (6)	ZINC PLATE
11	SCREW, 5/16"-18 X 3/8" SOCKET	SCR012	ALLOY
12	PANEL NUT, SERIES QA REGULATOR	QA-9 (3)	BRASS
13	PLUG, BOTTOM SERIES 200 REGULATOR	G-203	BRASS
14	O'RING, SERIES 014 VITON 75 DURO	014-V75	VITON
15	KNOB, ALUMINUM QA SERIES REGULATOR	QA-3R	ALUMINUM
16	HOUSING, SERIES QA REGULATOR	QA-4	BRASS
17	WASHER, STOP SERIES QA REGULATOR	QA-5	303 SST.
18	SCREW TIP, ADJUSTOR SERIES QA REG.	QA-6A	BRASS
19	BONNET, VALVE SERIES QA REGULATOR	QA-10	BRASS
20	NYLOC INSERT, SERIES QA REGULATOR	QA-29	DELTRIN
21	SCREW, 8-32 X 5/8" ALLOY, SOCKET	SCR003	ALLOY
22	DIAPHRAGM, SERIES JR REGULATOR	J-9	BUNA-N ON NYLON
23	NUT, DIAPHRAGM SCREW SER. 100 REG.	G-109	BRASS
24	CHAMBER, SERIES QA REGULATOR	QA-19-11	BRASS
25	O'RING RETAINER, SERIES QA REGULATOR	QA-13	BRASS
26	DUMBELL, SERIES QA REGULATOR	QA-14	BRASS
27	SPRING, SERIES QA REGULATOR	QA-17	302 SST.
28	DIAPHRAGM, SERIES 200 REGULATOR	G-210	BUNA-N ON NYLON
29	DIAPHRAM PLATE, SERIES QA REGULATOR	QA-18B (2)	BRASS
30	RIVET, DIAPHRAM SERIES QA REGULATOR	QA-18C	BRASS
31	ADJUSTING SCREW, SERIES QA REGULATOR	QA-1A	BRASS
32	DIAPHRAM WASHER, SERIES JR REGULATOR	J-10	BRASS
33	O'RING, SERIES 007 VITON 90 DURO	007-V90	VITON
34	DIAPHRAM SCREW	QA-12C	KEL-F



MAX. INLET PRESSURE 400 PSI (27.6 BAR)  
RELIEVING

THIS DOCUMENT CONTAINS INFORMATION THAT IS CONFIDENTIAL AND PROPRIETARY TO GENERANT CO., INC.. THIS DOCUMENT IS FURNISHED ON THE UNDERSTANDING THAT THE DOCUMENT AND INFORMATION IT CONTAINS WILL NOT BE COPIED OR DISCLOSED TO OTHERS EXCEPT WITH THE WRITTEN CONSENT OF GENERANT. IT WILL NOT BE USED FOR ANY PURPOSE OTHER THAN CONDUCTING BUSINESS WITH GENERANT AND WILL BE RETURNED AND ALL FURTHER USE DISCONTINUED UPON REQUEST BY GENERANT.

HOW TO ORDER



MATT. AS SPECIFIED		APPROVALS	
TOLERANCE SCHEDULE UNLESS OTHERWISE SPECIFIED		DRAWN H.H.	DATE: 1-22-10
FRACTIONAL: ± 1/64"		ENG. PROD.	SCALE: .75:1
ANGLES: ± 1/2"		TITLE: QUICK CHANGE REGULATOR, RELIEVING	
XX ± .010			
XXX ± .005 T.I.R.			
CONCENTRICITY: .005 T.I.R.		SIZE: B	DATE: 1-22-10
FINISHED SURFACES: 63 Ra		MFG. Q.A.	DWG. NO: QA-***-*
BREAK CORNERS/EDGES: .016 MAX.		SCALE: .75:1	SHEET: 1 OF 1